

ROBERTSON SHOW 2020

Horticultural & Cut Flowers

Pavilion Regulations

CHIEF PAVILION STEWARD: Mrs Margaret Whatman 4887 1306

Show Office - Open from 24th Feb 2020, Mon - Fri 9am - 5pm, Sat 7th Sun 8th March 10am - 2pm
Phone from 24th February 02 4885 1620, AH Rosemary 0409 244 574

REGULATIONS

- Entry forms may be:
PHONED (02 4885 1620), **FAXED** (02 4885 2138) **EMAILED** (robertsonshow@bigpond.com)
POSTED (PO Box 3044) or **DELIVERED** to the office in person.
- **All entry forms to be at the Show Office by 6pm Tuesday 10th March 2020**
- **LATE FEES WILL APPLY**
- Late entries may be displayed but will not be judged.
- For all exhibit closing times see the individual sections.
- Exhibits must not have been previously entered at Robertson Show
- Entry fees: Adults: non-members \$1.00, members 50c, Children Free.
- White Exhibitor Claim Tickets must be produced to claim exhibits & prizes.
- Most successful exhibitor: 1st = 3 points 2nd = 2 points 3rd = 1 point if awarded
- Pavilion opening hours: Friday 9.30am - 5pm; Saturday 9am - 8pm
- **Collection of exhibits: STRICTLY Sunday 15th March 2020 from 9am-11am.**
- **All perishable entries not collected by then will be placed in waste bins,**
- **All other entries may be collected by appointment.**
- All exhibits must be marked off by Stewards before leaving pavilion.
- **Prize money** in all Pavilion Classes (unless stated otherwise) **1st \$7, 2nd \$3.** Issued from Show Office from 9am Saturday 14th March. School monies will be issued at schools. Money not collected by Friday 27th March 2020 will be unavailable.
- **Ribbons & trophies:** issued with exhibits on Sunday 15th March.
- **Junior Ages** - 17 years and under - must still be 17 years at date of Show

RESPONSIBILITY

Damage through exhibits: The Society will not be responsible for any accidents that may be caused through or by any exhibits. It is a condition of every entry that each exhibitor shall hold the Society blameless and indemnify it against any legal proceedings arising from such accidents.

Damage to exhibits: The Society will not under any circumstances be responsible for any loss or miss-delivery of exhibits at the Show, or for any damage thereto.

DEFINITIONS:

AOV - any other variety.

NND - not necessarily distinct.

NOS - not otherwise specified.

NOVICE - exhibitor who has never won a prize at

Robertson Show in that class.

MOST SUCCESSFUL PAVILION EXHIBITOR 2020

Ribbon, Robertson Show Medal and Perpetual Trophy

Awarded to the Exhibitor who accrues the most points over all the Pavilion Sections

Proudly sponsored by Wingello Village Store

*Congratulations Phil Lavers
Moonacres Kitchen Robertson
Winner of the Most Successful Medal, 2019,*

SECTION 13 - HORTICULTURAL & CUT FLOWERS

Deadline for paper entry forms:	6pm Tuesday 10th March 2020
Staging of exhibits:	2pm - 5pm Thursday 12th March 2020
Judging:	6pm Thursday 12th March 2020
Entry fee: Adults \$1, members 50c, juniors free	Prize money unless otherwise stated: 1st \$7, 2nd \$3
Exhibits left in pavilion after 11am Sunday 15th March will be disposed of	
For all regulations, definitions, see page 1	

STEWARDS - Jenny Smith and Sue Kingsford

DEFINITIONS: Classes 1 – 47

- **Vase:** any bottle or container, with height greater than its width, suitable for showing cut flowers and foliage
- **Bowl:** any container with its diameter equal to or greater than its height
- A container should not be too large for the shelving
- Large ornamental vases are not recommended

ROSE CLASSES (Roses to be named)

- 1 3 vases - exhibitor's own choice, all distinct varieties, (must be different) 1 flower only, no buds
- 2 3 vases of exhibitor's own choice, **all different varieties of roses**, – 1 flower only no buds

Must be a resident of the Wingecarribee Shire

- 3 1 container of cluster flower roses 1 to 6 stems, must have minimum of ten blooms, all same cultivar
- 4 1 container of cluster flower roses 1 to 6 stems, must have minimum of ten blooms NND
- 5 1 Exhibition Rose, 1 flower only, no buds, *donated by Robertson Show Auxiliary* 1st \$10, 2nd \$5
- 6 1 Rose - 1 flower only, no buds, *donated by Robertson Show Auxiliary* 1st \$10, 2nd \$5
- 7 1 Rose - 1 flower only, no buds. **Must be a resident of the Wingecarribee Shire** 1st \$10, 2nd \$5
- 8 Four Stages of Life, 1 Bud, 1 Bud Opening, 1 Exhibition, 1 Full Blown Rose
- 9 Vase of 3 full blown Roses NND
- 10 Container of Roses, NND

BOWL CLASSES

Roses that can't be shown in above classes. May include buds, hips and foliage. **Max. size 30cm wide x 20cm high.**

- 11 Bowl of Roses - miniature or polyantha
- 12 Bowl of Large Flowered Climbers or Shrubs
- 13 Bowl of short stemmed cluster flowers, climbers or shrubs
- 14 Exhibit by a Novice Exhibitor (any of the above classes)

CHAMPION ROSE EXHIBIT (from classes 1 - 14)

\$ 50.00, Award & Ribbon *donated by Robertson Garden Club*

CUT FLOWERS

- 15 Belladonna - 3 cuts
- 16 Container of Pelargoniums or Geraniums
- 17 Container of Salvia - 3 cuts
- 18 Container of Proteas or Leucodendrons - 3 cuts - NND
- 19 Container of Alstroemeria (NZ Christmas Bells) - 3 cuts

- 20 Container of Michaelmas Daisies
- 21 Container of Anemone Hybrida (Japanese Windflowers) - 6 cuts
- 22 Container of Hydrangeas - 3 Cuts – NND, *donated by Robertson Garden Club* 1st \$15, 2nd \$5
- 23 Container of Paniculatas - 3 Cuts (New Zealand Hydrangea)
- 24 Container of Fuchsias
- 25 Container of Nerines - NND, min. 1 max. 4
- 26 Container of Flowers - AOV, same type (No Dahlias)
- 27 Container of Native flowers, *donated by Robertson Show Auxiliary* 1st \$10, 2nd \$5
- 28 Container of Hedychium (Ginger Lily) - 3 cuts
- 29 Container of Flowers from shrubs or trees, 3 cuts
- 30 Container of Coloured Foliage, 4 cuts Page 7
- 31 Collection of flowers NND
- 32 Container of Mixed Blooms shown by a Novice Exhibitor 1st \$15, 2nd \$5
- Donated in Memory of Mrs Ann Schofield*

CHAMPION CUT FLOWER EXHIBIT (from classes 15-32) Award & Ribbon

In Memory of Mrs Marguerite Cromarty, donated by her Family

JUNIORS 8 yrs & under	12 yrs & under	17 yrs & under
33 Container of Lavender	38 Container of Lavender	43 Container of Lavender
34 Container of Hydrangeas	39 Container of Hydrangeas	44 Container of Hydrangeas
35 Container of Native flowers	40 Container of Native flowers	45 Container of Native flowers
36 Container of Flowers - AOV same type	41 Container of Flowers - AOV same type	46 Container of Flowers - AOV same type
37 Container of Mixed flowers	42 Container of Mixed flowers	47 Container of Mixed flowers

JUNIOR CHAMPION CUT FLOWERS (from classes 33-47) \$5 & Ribbon

In Memory of Mrs Marguerite Cromarty, donated by her Family

DAHLIAS

- Dahlias over 160mm are shown one to a vase.
- Dahlias under 160mm are shown three to a vase, except Show Dahlias, which are shown one to a vase.
- A vase is any bottle or container suitable for showing Dahlias.
- **DISTINCT:** Means that the bloom must be of a different cultivar from the others.
- **N.N.D.: Not Necessarily Distinct.** This means that two (2) or more blooms may be of the same cultivar. Where NND is specified for one vase of three blooms, each one of the different cultivars may be or may not be shown.

48 ROBERTSON DAHLIA CHAMPIONSHIP 1st - \$50, Award & Ribbon, *donated by Robertson Garden Club*

Cultivars to be named - 3 vases, distinct types, standard units

49 TED McGUINNESS MEMORIAL AWARD - *donated by Mrs Edna McGuinness*

Cultivars to be named - 1 Decorative dahlia, 1 Exhibition dahlia, 1 Cactus dahlia

50 MISS JOAN MEMORIAL AWARD

1 vase collarette, 3 blooms, 1 variety - Miss Joan, under 160mm, Best Vase \$20

Donated by Mr David Cunningham in memory of his mother, Joan Cunningham

51 One Decorative Dahlia over 160mm

52 1 Vase Decorative Dahlias under 160mm - 3 blooms

53 1 Cactus Dahlia over 160mm

54 1 Vase Cactus Dahlias - under 160mm - 3 blooms

55 1 Vase Waterlily Dahlias - 3 blooms

56 1 Vase Pom Pone Dahlias - 1 variety - 3 blooms

57 1 Dahlia, any other variety

58 Novice - 1 Vase - 3 blooms, any variety. *donated by Mrs Annette O'Donnell*

JUNIOR BEGINNERS, 17 years and Under

59 1 dahlia over 160mm

60 1 vase dahlia under 160mm, 3 blooms

GRAND CHAMPION DAHLIA - \$80, Award & Ribbon

Donated by Robertson Garden Club

MOST SUCCESSFUL EXHIBITOR - Ribbon

In Memory of Mrs Marguerite Cromarty, donated by her Family

THANK YOU

The Robertson Show Society and Margaret Whatman, Chief Pavilion Steward, and all Pavilion Volunteers, wish to thank all our sponsors, especially the businesses listed below and we urge you to please support them.



Email: info@southernprintersupplies.com.au
Phone: 0466 212 572



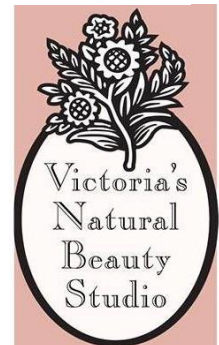
NORMAN HAULAGE GROUP

Call Vinnie 0412 480 436

Grain & Pellet - Dairy & Beef - Fertiliser & Lime



Allan Mackay Autos



Robertson Show Society Thanks



A NUTRIEN AG SOLUTIONS PARTNER

For Sponsorship of the 2020 Robertson Show